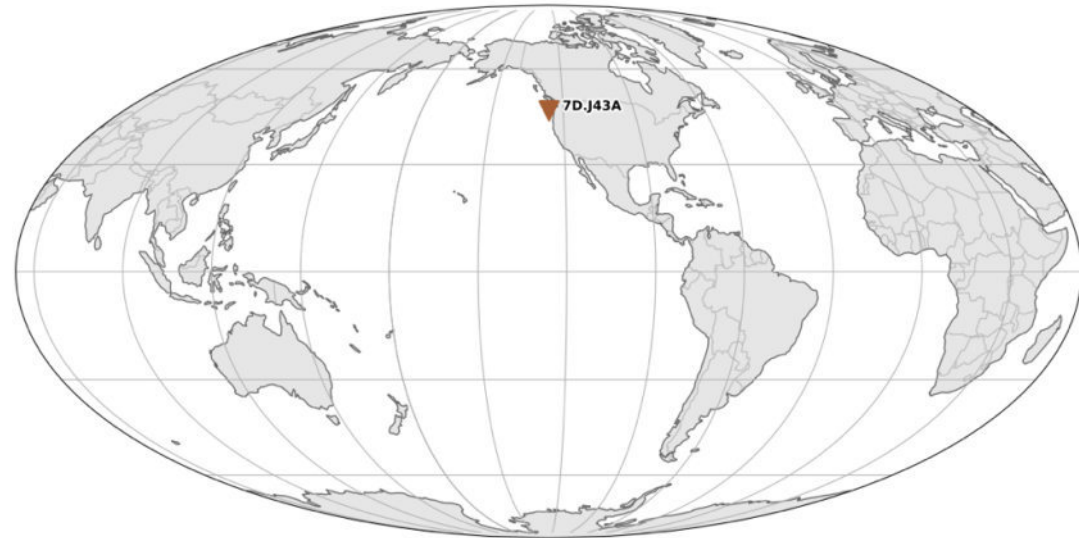
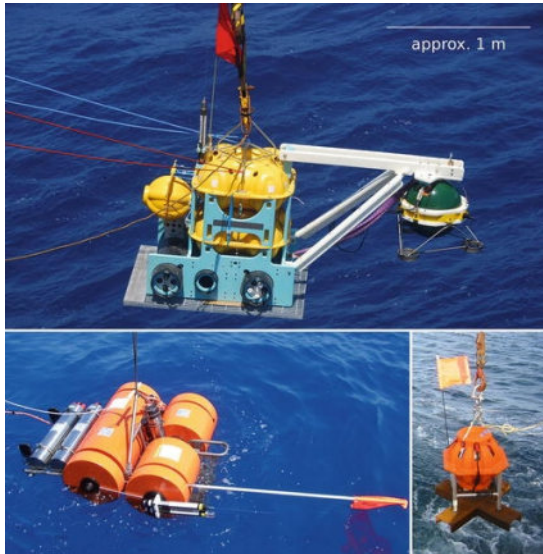


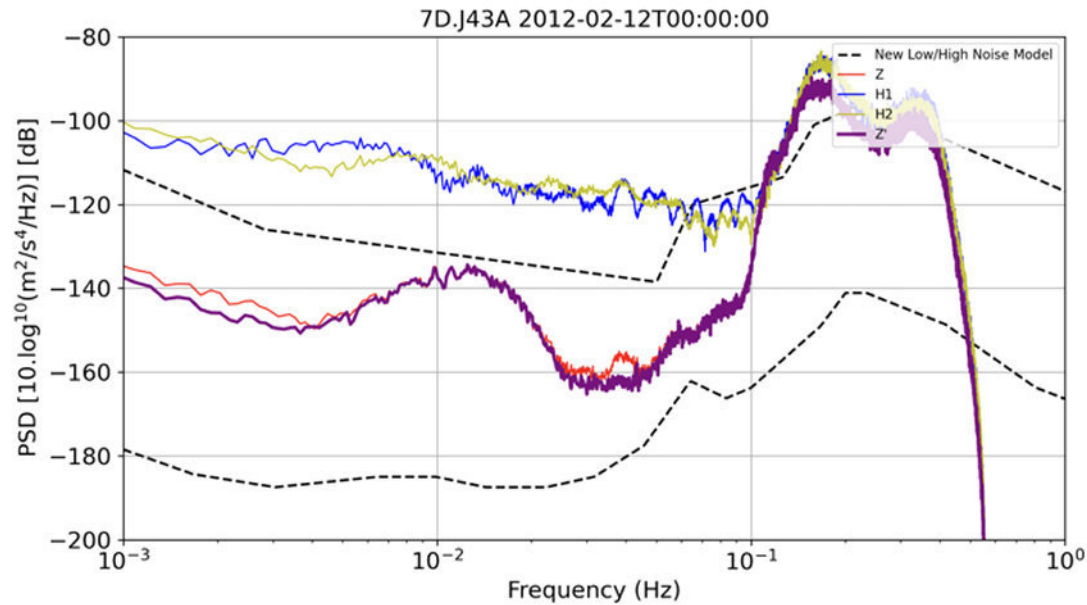
Tilt Correction & Compliance Removal from Ocean Bottom Data

- **Tilt** effect:
- **Compliance**:



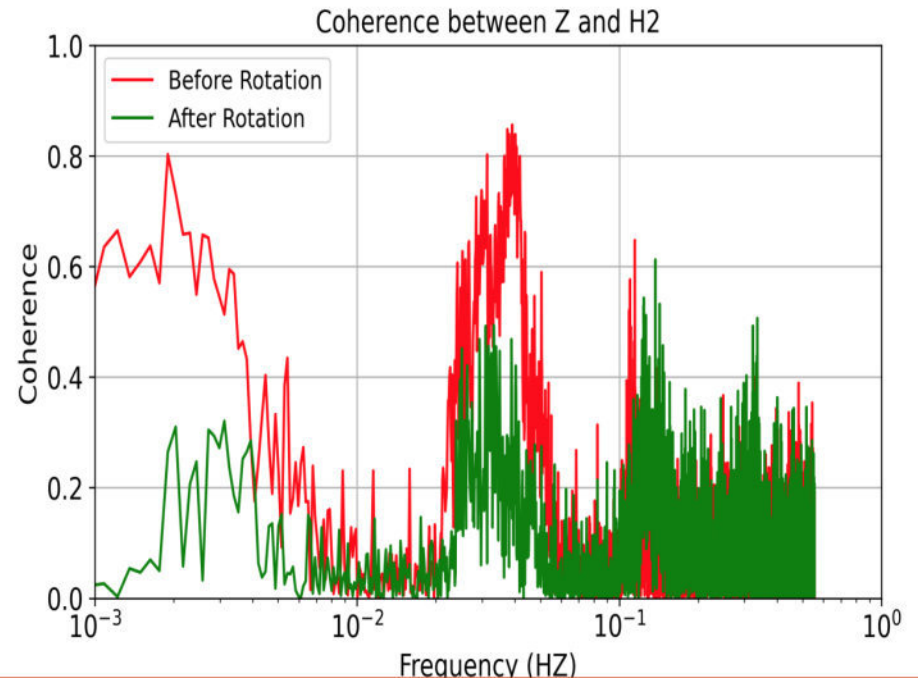
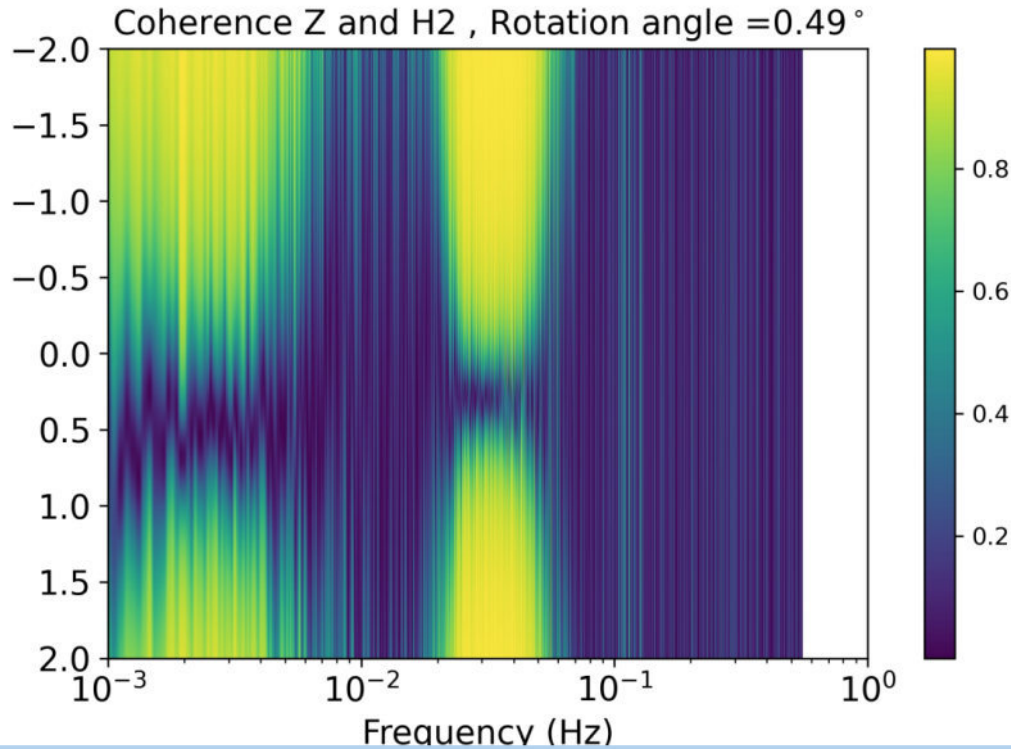
Tilt Correction

- **Tilt** effect: Bottom currents create noise by turbulent interaction with the seismometer package.



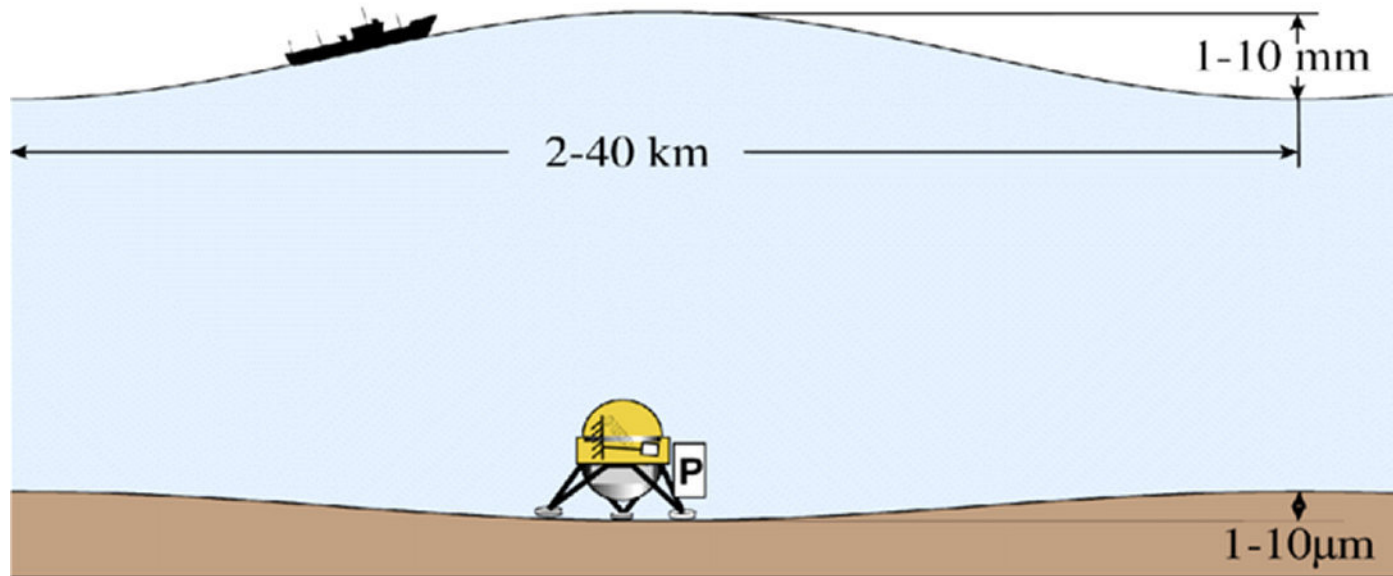
Tilt Correction

- Coherence :

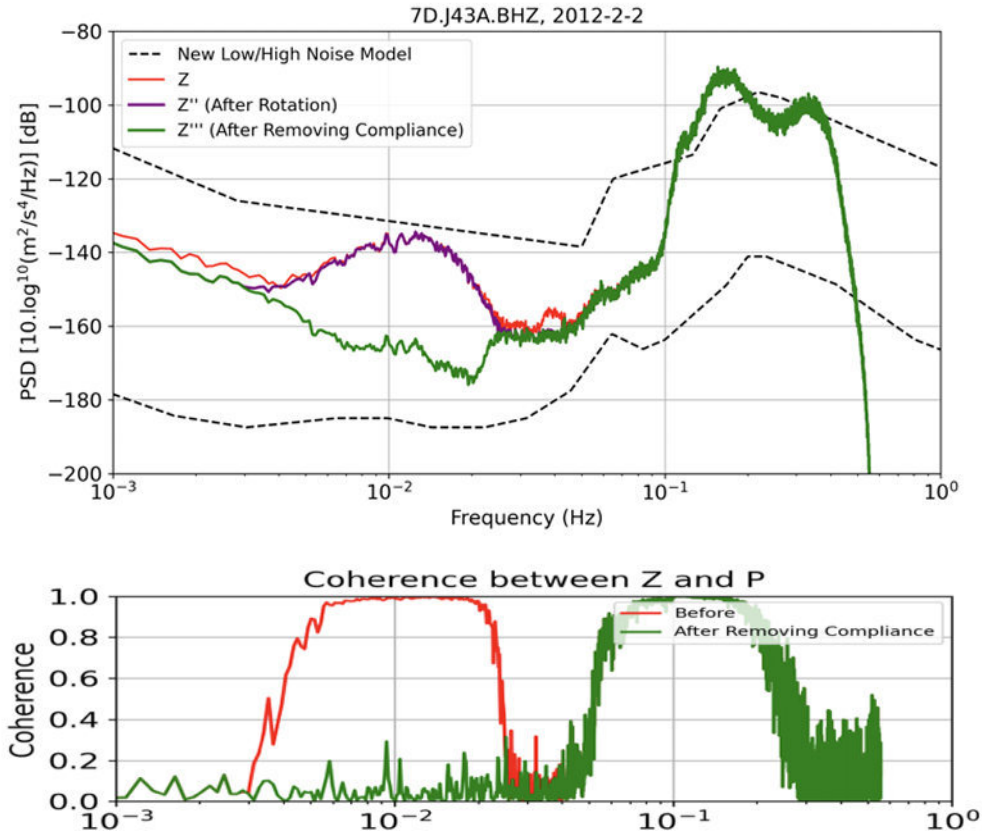


Compliance Removal from Ocean Bottom Data

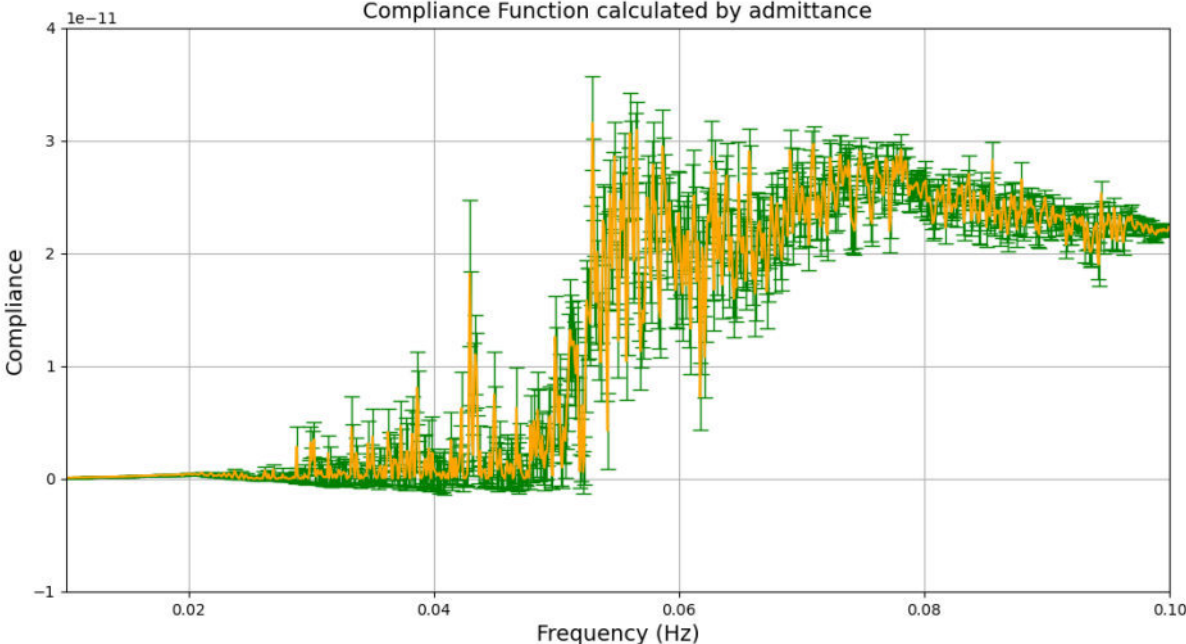
Compliance noise: is created when pressure variations associated with water waves induce vertical motion of the seabed.



Compliance

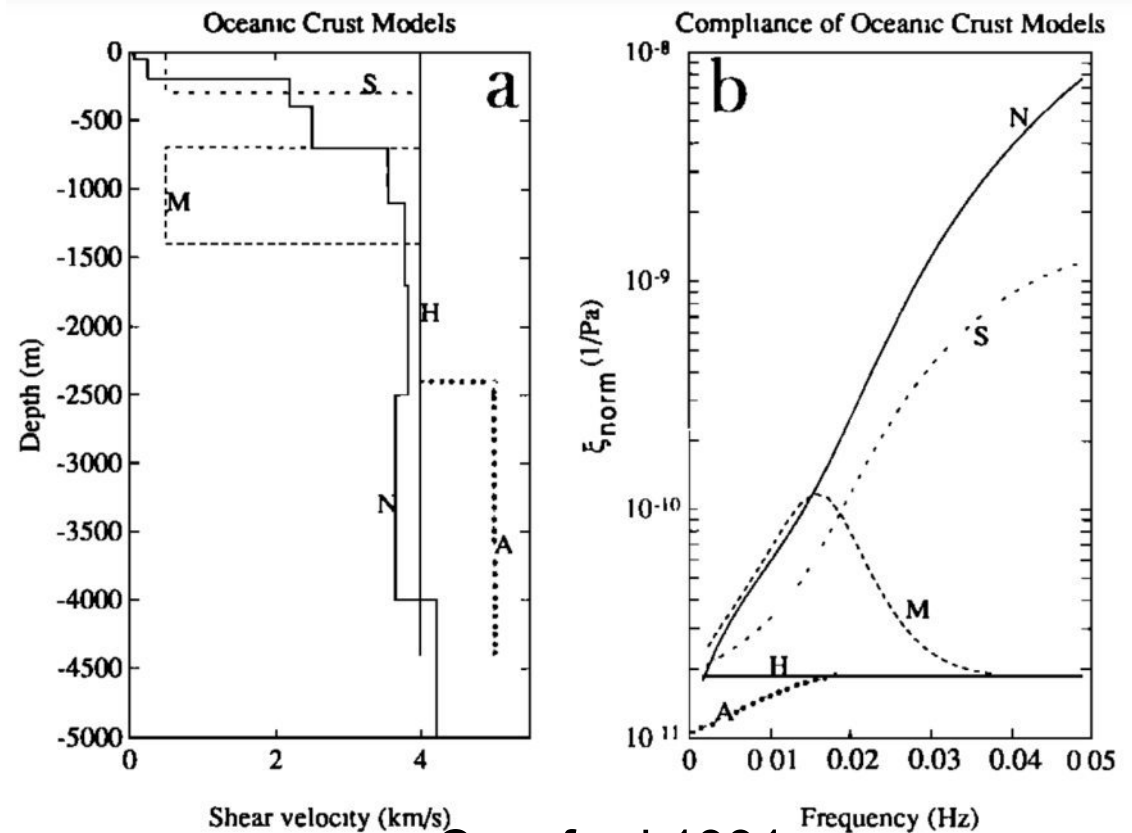


Compliance:



Compliance:

- H = uniform half-space
- S = ideal sediment-covered
- M = ideal magma chamber
- A = ideal asthenosphere
- N = normal model



▪ Crawford 1991